

# 2645 MEDICAL CENTER

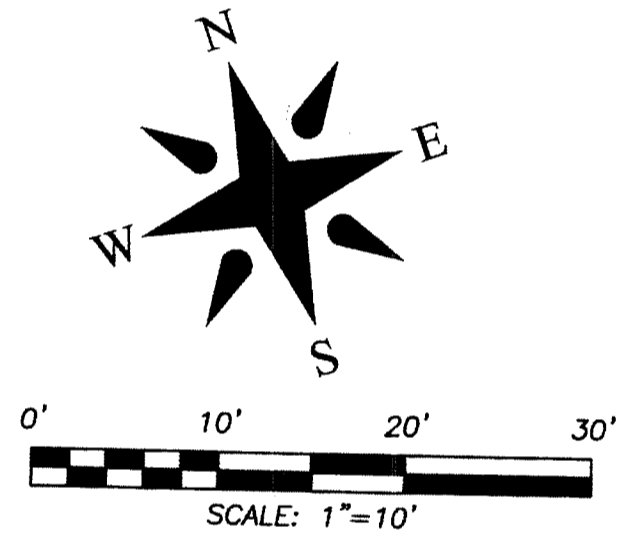
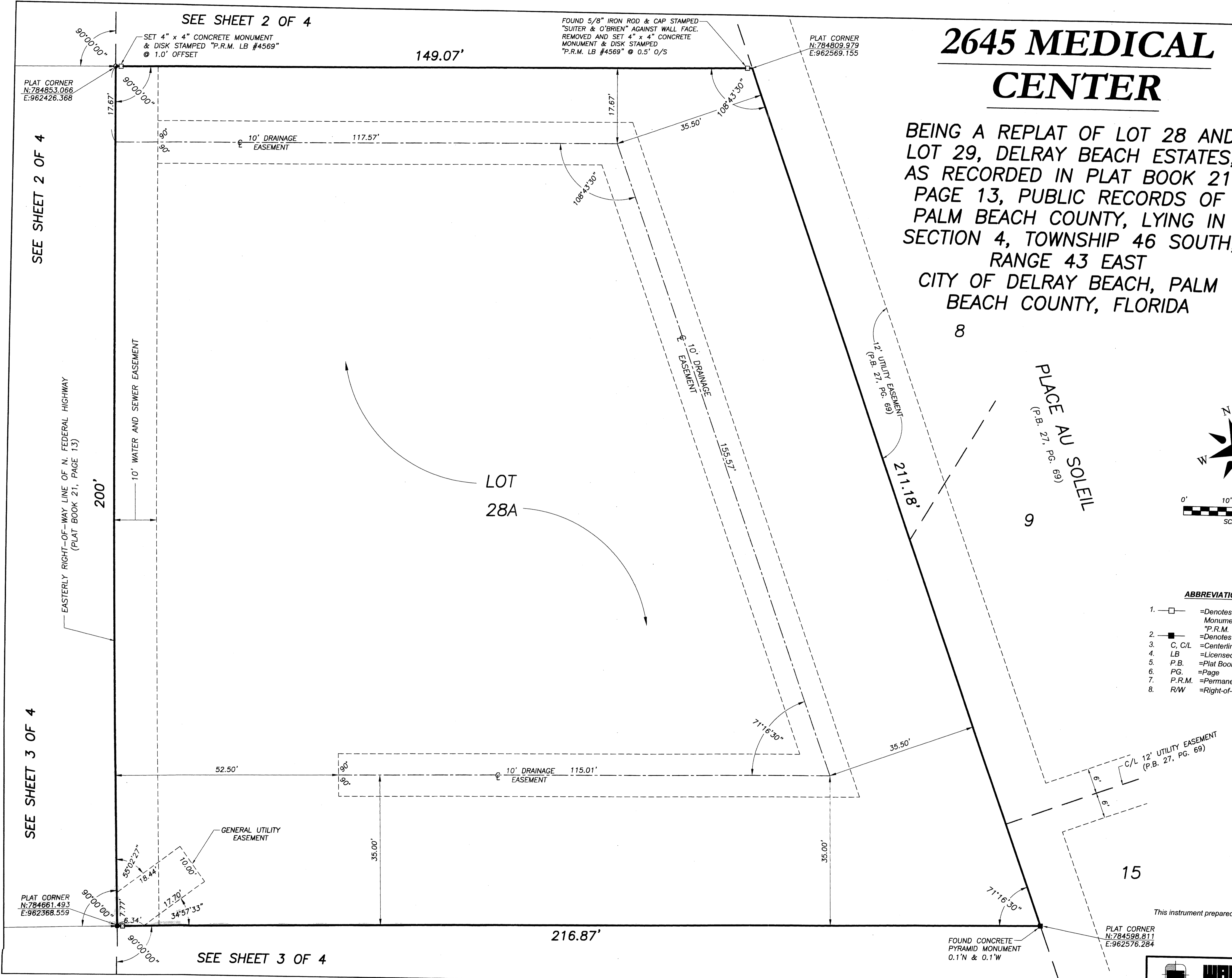
BEING A REPLAT OF LOT 28 AND LOT 29, DELRAY BEACH ESTATES, AS RECORDED IN PLAT BOOK 21, PAGE 13, PUBLIC RECORDS OF PALM BEACH COUNTY, LYING IN SECTION 4, TOWNSHIP 46 SOUTH, RANGE 43 EAST CITY OF DELRAY BEACH, PALM BEACH COUNTY, FLORIDA

# 118

STATE OF FLORIDA  
 COUNTY OF PALM BEACH  
 THIS PLAT WAS FILED FOR RECORD AT \_\_\_\_\_ M. THIS \_\_\_\_\_ DAY OF \_\_\_\_\_ A.D. 20\_\_\_\_ AND DULY RECORDED IN PLAT BOOK \_\_\_\_\_ ON PAGES \_\_\_\_\_ AND \_\_\_\_\_  
 SHARON R. BOCK  
 CLERK AND COMPTROLLER

BY: \_\_\_\_\_  
 DEPUTY CLERK

SHEET 4 OF 4



- ABBREVIATIONS AND SYMBOLS**
- 1. □ = Denotes Set 4" x 4" Permanent Reference Monuments (P.R.M.'s) with disk Stamped "P.R.M. LB #4569"
  - 2. ■ = Denotes found concrete pyramid monument
  - 3. C, C/L = Centerline
  - 4. LB = Licensed Business
  - 5. P.B. = Plat Book
  - 6. PG. = Page
  - 7. P.R.M. = Permanent Reference Monument
  - 8. R/W = Right-of-Way

This instrument prepared by: Robert J. Cajal  
 Wallace Surveying Corporation  
 5553 Village Boulevard  
 West Palm Beach, FL 33407  
 561/640-4551

